

Lío London

Lindapter Type ALPs provided a quick, non-intrusive solution for securing lighting supports, preserving the venue's heritage while meeting safety standards.

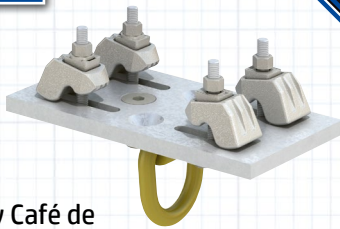
Project Background

Location: London, UK

Product: Type ALP -
Adjustable Lifting Points

Contractor: WFC Contractors

Installer: Outback Rigging



Once known as the legendary Café de Paris, this lavish event space, which once hosted icons like Judy Garland, Frank Sinatra, and Grace Kelly, had fallen into disrepair by the time WFC began its refurbishment in July 2022. The transformation of Café de Paris into Lío London aimed to modernize the venue while maintaining its historic character. Renowned for its luxurious cabaret performances, the venue needed an upgraded lighting system that could enhance the visual experience of each performance. The challenge was to integrate modern lighting supports without compromising the building's architectural integrity.

Client Requirement

The installer, Outback Rigging, needed a readily available, off-the-shelf solution to meet the project's tight deadline. The installation process had to be quick to minimize downtime, while also ensuring a secure and reliable attachment method for the heavy and dynamic lighting fixtures. Adjustability was also a priority, allowing precise positioning of the lights to optimize stage effects and enhance the audience experience.



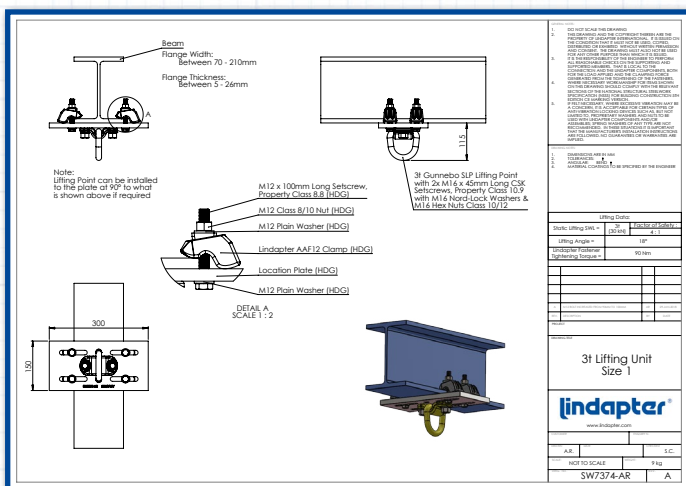
Lindapter's adjustable lifting point solution ensured minimal disruption to the existing structure

Lío London

Design Solution

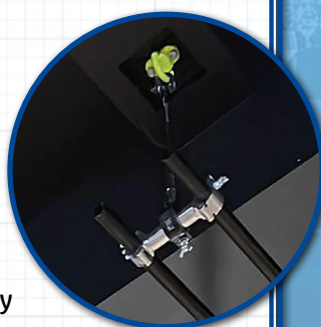
Lindapter's Adjustable Lifting Points (ALP3T-1 and ALP3T-2) were selected for their high load capacity and adaptability. These lifting points provided a secure attachment method without requiring drilling or welding, preserving the venue's existing steel structure while ensuring compliance with safety regulations.

Their adjustable design allowed for precise alignment of the lighting supports, improving the overall stage setup. Additionally, as an off-the-shelf solution, the Type ALPs were readily available, helping to keep the project on schedule.

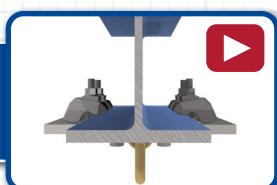


Installation

The Type ALP lifting points were installed onto the existing steel beams without any modifications, such as drilling or welding. Their adjustable design allowed for real-time positioning adjustments, ensuring that the lighting was precisely aligned to maximize the stage's visual impact. The user-friendly design of the lifting points enabled the installation team to complete the process quickly and efficiently, maintaining both safety and reliability while staying within the project's timeline.



Click here to watch the installation video >>>



Result

The refurbishment of Lío London revitalized the venue's iconic structure, successfully integrating modern engineering with the preservation of the venue's historic charm. Lindapter's Type ALP Adjustable Lifting Points provided a secure and reliable solution for attaching lighting supports, meeting strict safety standards.

The non-intrusive installation preserved the building's architectural integrity, avoiding permanent alterations such as drilling or welding. The installation was completed on time, allowing the venue to reopen as scheduled and welcoming audiences to enjoy its refreshed, yet timeless, ambience.



Type ALP provided a secure, reliable solution for attaching lighting supports

Key Benefits

- ✓ **Time-Saving Installation:** Quick, efficient, off-the-shelf solution.
- ✓ **Enhanced Safety:** Secure, stable, meets safety standards.
- ✓ **Preservation of Structure:** Non-intrusive, no drilling required.
- ✓ **Adjustability:** Real-time, precise lighting alignment.
- ✓ **Cost-Effectiveness:** Reduced costs, no custom fabrications.
- ✓ **Versatility:** Handles high loads with ease.