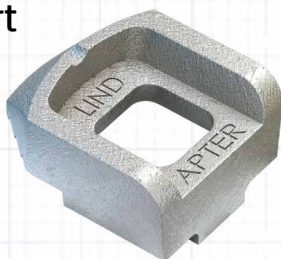


Great Ormond Street Hospital

Lindapter Girder Clamps secured secondary steel to support heavy duty pipes.

Project Background

Location: London, UK
Product: Type A Girder Clamps
Market: Building Services
Client: NHS Foundation Trust
Installer: Fascel Group



Great Ormond Street Hospital opened in 1852, and has grown into one of the world's leading children's hospitals for paediatric care and research. However most of the hospitals buildings are nearing the end of their useful lives and are becoming increasingly inadequate. In 2004 an ambitious four-phase redevelopment programme to rebuild two thirds of the hospital site over a 20-year period began.

Client Requirement

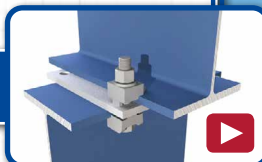
The latest redevelopment at the hospital site required a safe and secure method of connecting secondary steel to the main structural frame. This secondary steel would support heavy-duty mechanical pipework and building services pipes around the building. Engineers also required the supports to be adjustable to allow for onsite tolerances.



Design Solution

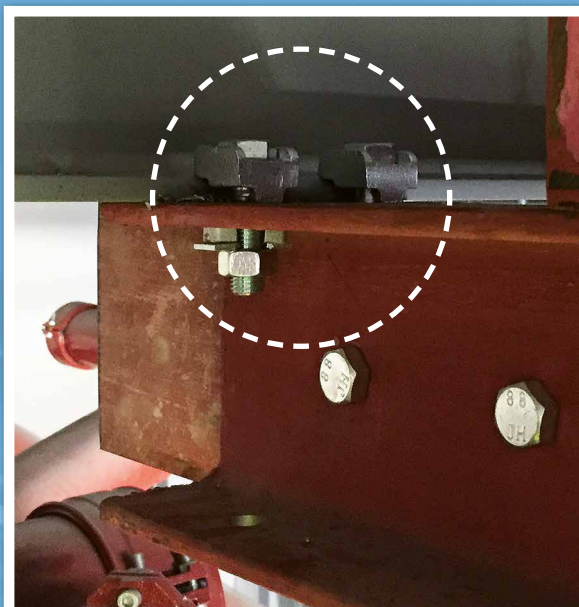
Lindapter worked with the engineer to design a simple but effective connection detail using Lindapter Type A Girder Clamps. Steel sections connected to the main structural beams using Type A girder clamps were specified. The steel section crossed the existing steel at 90° and provided the necessary tensile strength to support further secondary steel below and the pipes.

Watch the installation video here >>



Installation

Installation was quick and easy as each bolt was simply inserted into predrilled holes in the new steel sections with the Type A on one end and nut on the other. The adjustability of the girder clamps allowed the contractor to align the steel sections into the exact positions required. To complete the installation, the recessed top of the clamp held the bolt captive while the nut was tightened with standard hand tools, quickly achieving a safe and secure connection.



Girder Clamps connect secondary steel to the main beam

Result

Lindapter girder clamps provided fast installation and avoided costly onsite drilling or welding. The adjustability of the girder clamps also gave the contractor flexibility to overcome any onsite alignment issues.

Girder clamps have independent technical accreditations, including the CE mark (ETA-13/0300), TÜV and Lloyd's Register approvals. These accreditations verify the tensile load capacities that led to a safe installation.

**Click here
for more
details**