

Power Station Expansion

Lindapter Girder Clamps provided a solution for securing steel sections and brackets to support additional pipes.

Project Background

Location: Viña del Mar, Chile

Product: Type AAF & Type CF

Market: Power Generation (other)

Client: AES Gener



AES Gener is a large producer and distributor of electricity based in Santiago, Chile, which operates in South America's Andes region. To meet growing demand and increase electricity production AES identified one of their power stations in Viña del Mar on the Pacific west coast for expansion and modernization.

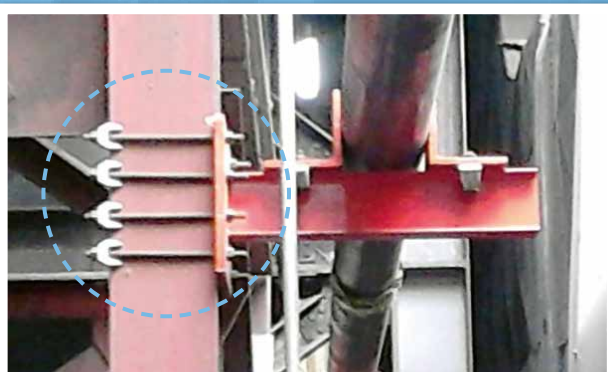
Client Requirement

During the expansion of the power station engineers needed a safe and secure method of connecting steel sections and bracketry to the existing structure to create pipe supports that would carry pipe lines around the plant. Engineers required the supports to be adjustable to allow for pipe installation tolerances, this was particularly important at critical locations such as pipe line joints.

Another consideration was prevention of any damage to the existing steel structure that would be caused by traditional drilling or welding connections.



Type AAF girder clamps used in tensile and slip



Type CF clamps used to hook around the flange

Power Station Expansion

Design Solution

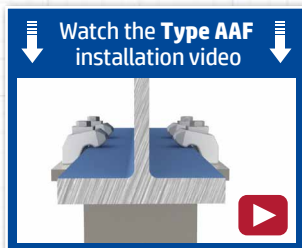
Lindapter worked with the engineers to design several simple but effective connection details and brackets using Type AAF and Type CF girder clamps. Adjustable Type AAF high slip resistance girder clamps in various configurations were specified for both tensile and frictional connections of the brackets.

Where brackets needed to be connected to vertical steel sections and across the beam from one flange to the other, Type CF girder clamps were specified as they are designed to hook over the edge of the flange.



Installation

The adjustability of the girder clamps allowed the contractor to slide and align the steel sections with end plates into the exact positions required, before the clamps were tightened with hand tools. Brackets were then connected to the steel sections to safely hold the pipes in position. Once again the adjustability gave the contractor flexibility to overcome any alignment issues in the field.



Result

Lindapter girder clamps provided a drilling and weld free connection that prevented any damage to the existing steel. The contractor found the process of aligning the steel sections and pipe brackets quick and easy due to the adjustability of the clamps.

The girder clamps have independent technical accreditations, including the CE mark (ETA-13/0300), and TÜV approval, in addition the Type AAF has ICC-ES approval. These accreditations verify the load and slip capacities that led to a safe and successful installation.



Via del Mar power station during expansion

Approvals

* Type AAF only



[Click here for Type AAF data >>](#)



[<< Click here for Type CF data](#)

