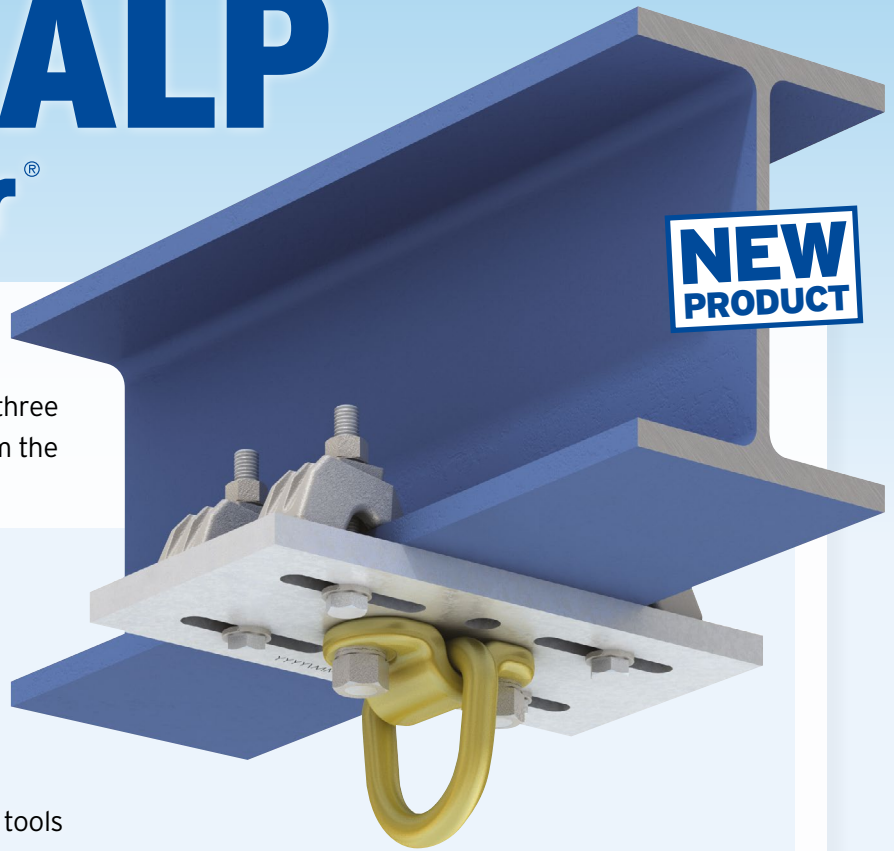


TYPE ALP

by **lindapter**[®]



The Type ALP (Adjustable Lifting Point) is Lindapter's standard rigging and lifting solution that safely supports loads up to three metric tonnes with a +/- 18° lift angle from the supporting steelwork.

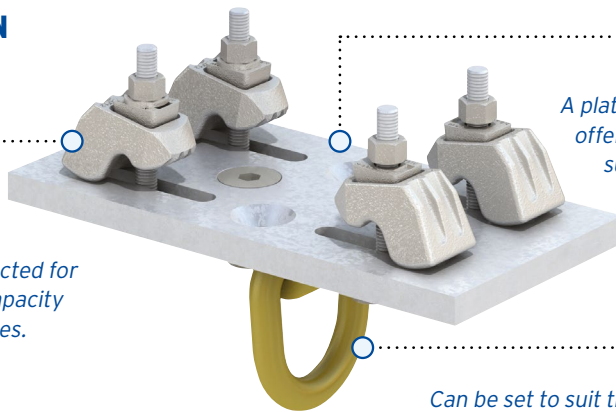
KEY BENEFITS

- Immediately available 'off-the-shelf'
- Safe working load up to 3t (29.4kN)
- Adjusts to fit different sized beams
- For parallel and tapered flanges
- Versatile and easily repositioned
- Quick to install using standard hand tools

PRODUCT CONFIGURATION AND TECHNICAL DATA

Type AAF Clamps (x4)
SG iron, HDG

Secures the Location Plate to the supporting steel section.
The Type AAF is specifically selected for its high safe working load and capacity to fit a range of flange thicknesses.



Location Plate
Mild steel, HDG

A plate with slotted holes that offers lateral adjustability to suit various beam widths.

Load Ring
Forged steel, painted

Can be set to suit the orientation of the lift.

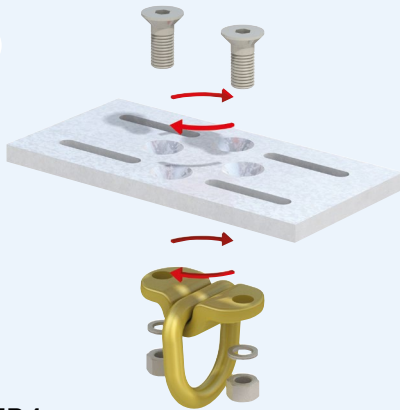
Product Code	Torque Figures				Clamping Range				Safe Working Load (4:1 Factor of Safety)	Max Angle of Load
	Load Ring Countersunk Bolts		Type AAF Set Screws		Flange Thickness		Beam Width			
	10.9 Bolt	Torque Nm	8.8 Bolt	Torque Nm	Min mm	Max mm	Min mm	Max mm		
ALP 3T-1	M16	100	M12	90	5	26	70	210	3t (29.4kN)	18°
ALP 3T-2	M16	100	M12	90	5	26	190	330	3t (29.4kN)	18°
ALP 3T-3	M16	100	M12	90	5	26	310	450	3t (29.4kN)	18°

➤ For larger steel sections or heavier loads, please contact Lindapter for bespoke Lifting Points manufactured to suit individual applications.

Type ALP by lindapter®

INSTALL IN TWO EASY STEPS...

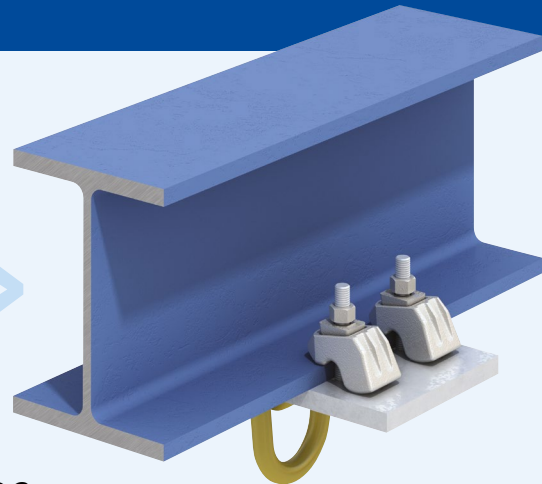
1



STEP 1

Fix the load ring in the orientation required with the supplied countersunk setscrews and anti-vibration washers then use a calibrated torque wrench to tighten to 100Nm.

2



STEP 2

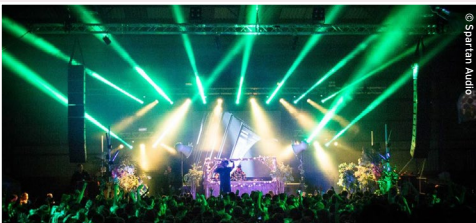
Offer lifting point assembly up to beam ensuring the plate is located centrally to the beam, loosely secure the clamps then, when happy with the alignment, use a calibrated torque wrench to tighten to 90Nm.

CASE STUDY: THE COLOR FESTIVAL, CARDIFF



Lindapter's Adjustable Lifting Point was used to connect sound and lighting equipment to overhead structural beams at The Color Festival in Cardiff.

The Type ALP was chosen to secure the 6.3kN (642kg) equipment from sloped beams because it provides resistance to tensile, frictional and combined loading.



The contractor, Spartan Audio, was able to use one type of lifting point throughout the project as the Type ALP adjusts to fit various sized beams, creating additional convenience for the installers. After the festival, the contractor simply reversed the installation procedure and quickly unclamped the lifting system without any damage to the steel beams.

For larger steel sections or heavier loads please contact Lindapter for bespoke Lifting Points, manufactured for individual applications.

