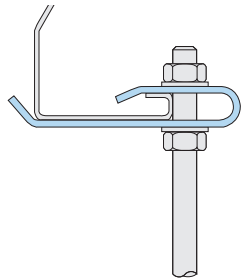
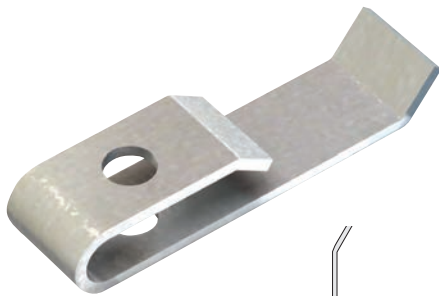


## Type HCW30

A purlin clip suitable for horizontal purlins.



Material: Pre-galvanised strip.

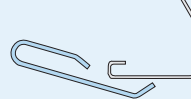
Code	Purlin	Rod	Safe Working Load (FOS 3:1)	
			Tensile kN	Tightening Torque Nm
HCW30	Kingspan Multibeam 3	M10	0.2	8

➤ Safe working loads are subject to the strength of the purlin. Please refer to the purlin manufacturer's literature.

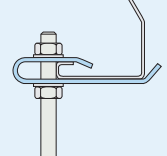


### How to install...

1.

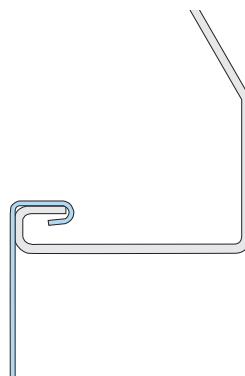


2.



## Type HCW31

A universal purlin clip suitable for multiple applications.



Material: Pre-galvanised strip.

Code	Purlin	Safe Working Load (FOS 3:1)
		Tensile kN
HCW31	Kingspan Multibeam 3	0.2

➤ Safe working loads are subject to the strength of the purlin. Please refer to the purlin manufacturer's literature.

