



Type AF and Type AAF Special Inspection Document to comply with ICC-ES ESR 3976

Ref: SIDGC_MAR19

As required by:



To verify correct installation including use in seismic or wind loading applications in accordance with the 2012 and 2015 International Building Code Sections 1705.1, 1705.2, 1704.3 and 1705, please refer to the following instructions, and those referenced in AISC 360-10 section N5-6 and the RCSC Specification for Structural Joints Using High-Strength Bolts.

Inspection prior to installation...

- There are no gaps between the connecting steelwork.
- Ensure all components are of correct size and specification. Only bolts of grades A325 or A490 are to be used.
- The location plate or end plate is of the correct dimensions and material in accordance with the Lindapter website or a Lindapter connection detail drawing.
- The holes are the correct diameter, conforming to AISC 360 and are positioned in accordance with the Lindapter website for location plates and end plates.
- The connecting steelwork is plain or galvanised.
- Verify that the correct type and number of packing pieces relative to the clamping thickness, as per Lindapter's website or a Lindapter connection detail drawing, are used within the assembly.

Inspection during installation...

- Assemble the girder clamp assembly as instructed. Ensure the DTI arches are braced against the hardened bearing surface of the nut, bolt or washer. For more instruction on the usage of DTI washers refer to the RCSC Specification for Structural Joints Using High-Strength Bolts and the DTI washer manufacturer's instructions.
- Ensure the top surface of the clamp and the bolt head are parallel to the steel work. Packing pieces are used to level the clamp.
- Use a bolt tightening sequence that ensures even preload and is in accordance with the relevant standards.
- Ensure that the DTI washers are activated in accordance with the manufacturer's instruction.

Inspection after installation...

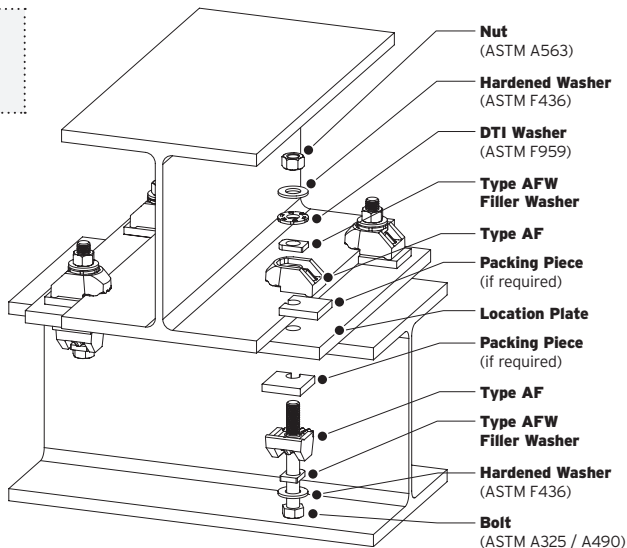
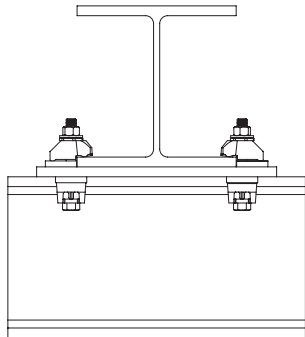
- There are no gaps between the connecting steel work.
- Bolt heads and the top surface of the clamps are parallel to the location plate/end plate.
- The DTIs are activated in accordance to the manufacturer's instruction.
- Verify that the correct type and number of packing pieces relative to the clamping thickness, as per Lindapter's website or a Lindapter connection detail drawing, are used within the assembly.

Contact Lindapter Technical Support for more information:

866 566-2658 (BOLT) | support@LindapterUSA.com | www.LindapterUSA.com

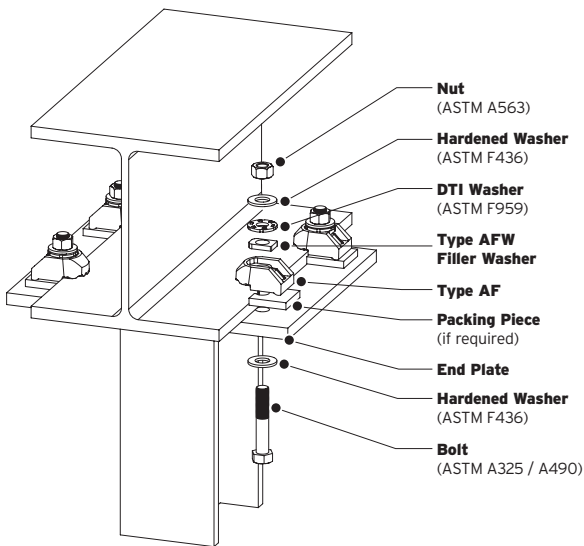
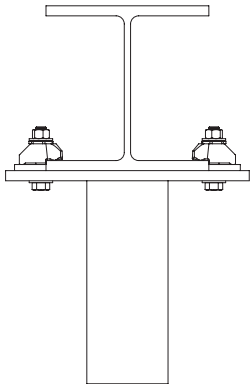
Type AF Installation when using a Location Plate

in accordance to ICC-ES ESR 3976



Type AF Installation when using an End Plate

in accordance to ICC-ES ESR 3976

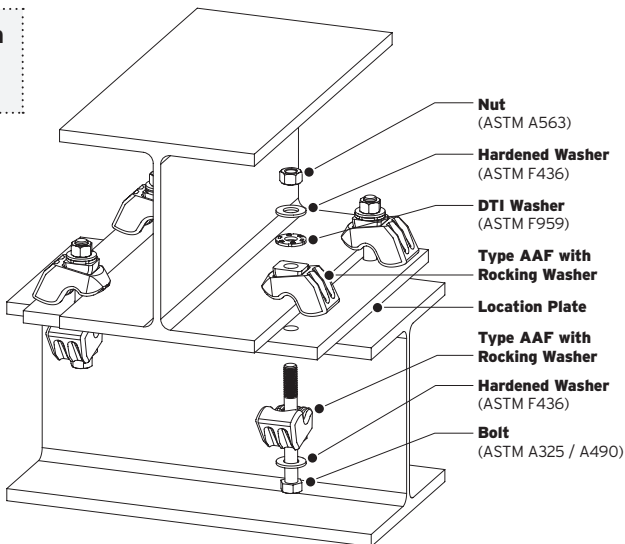
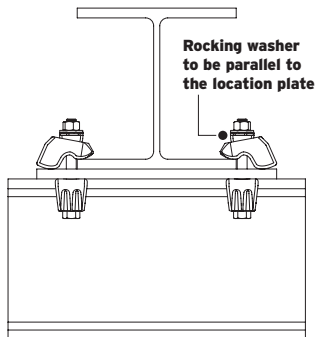


Contact Lindapter Technical Support for more information:

866 566-2658 (BOLT) | support@LindapterUSA.com | www.LindapterUSA.com

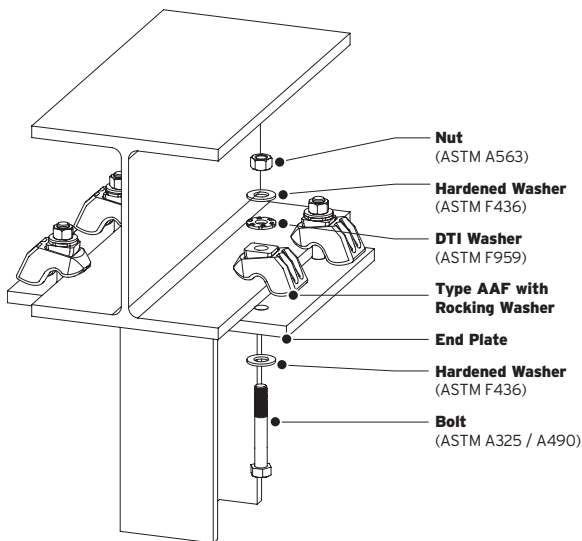
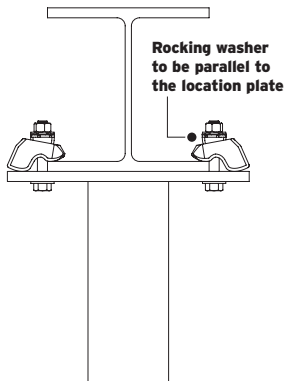
Type AAF Installation when using a Location Plate

in accordance to ICC-ES ESR 3976



Type AAF Installation when using an End Plate

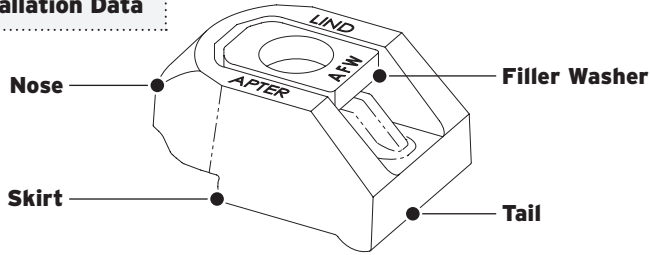
in accordance to ICC-ES ESR 3976



Contact Lindapter Technical Support for more information:

866 566-2658 (BOLT) | support@LindapterUSA.com | www.LindapterUSA.com

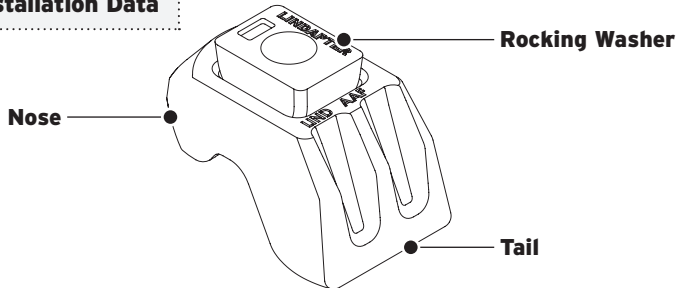
Type AF Installation Data



Product Code	Bolt	Bolt Grade	DTI Washer Class to ASTM F959*	
			A325	A490
LAF050	1/2"	A325 / A490	325	490
LAF062	5/8"	A325 / A490	325	490
LAF075	3/4"	A325 / A490	325	490
LAF100	1"	A325 / A490	325	490

* Only assemblies utilising a DTI washer are subject to ICC-ES approval. For torque values and alternative bolt grades please contact Lindapter.

Type AAF Installation Data



Product Code	Bolt	Bolt Grade	DTI Washer Class to ASTM F959*		Clamping Range	
			A325	A490	Min	Min
LA AF050	1/2"	A325 / A490	325	490	3/16"	1"
LA AF062	5/8"	A325 / A490	325	490	1/4"	13/16"
LA AF075	3/4"	A325 / A490	325	490	1/4"	19/16"

* Only assemblies utilising a DTI washer are subject to ICC-ES approval. For torque values and alternative bolt grades please contact Lindapter.

Contact Lindapter Technical Support for more information:

866 566-2658 (BOLT) | support@LindapterUSA.com | www.LindapterUSA.com